

Estimated Cost

\$5,000 - \$5,300

per participant (includes travel,
lodging, in-state tuition, and fees)

\$815 additional for out-of-state tuition

\$500 deposit due upon acceptance
(rolling admission)

Application Deadline

December 1st



SUMMER 2019

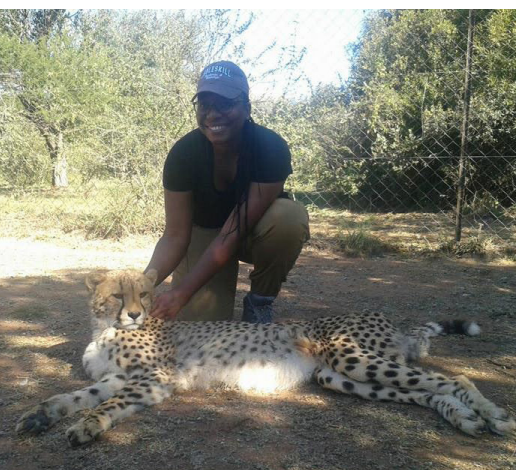
Wildlife Conservation Field Studies

SOUTH AFRICA

Embark on the
Adventure of a Lifetime

May 12TH - 27TH

FWLD/ANSC 270 - 2 Academic Credits



Visit: University of Pretoria, Swadini Nature Reserve, Ujejane Village,
Wildlife Rehabilitation Centre/Reptile Park

Trip Highlights: This two-week camping safari with Eco Life Expeditions provides hands-on wildlife management experience while familiarizing students with the day-to-day responsibilities of rangers, conservationists, on-site researchers, and veterinary professionals. Participants will gain insight into the state of wildlife conservation in South Africa, learning about the successes and failures associated with wildlife management and rehabilitation.

Participating Faculty: Dr. Lynn Geoffrey and Eric Struening

For More Information & To Apply

internationaleducation@cobleskill.edu

518.255.5556 • Bouck Hall 116

Program costs, including those advertised here, are subject to change without notice due to factors beyond SUNY Cobleskill's control, including changes in exchange rates and international airfares.

SUNY **Cobleskill**
International Education